



## Üretim Yönetimi Kullanım Senaryoları

farplas

iffet İYİGÜN MEYDANLI



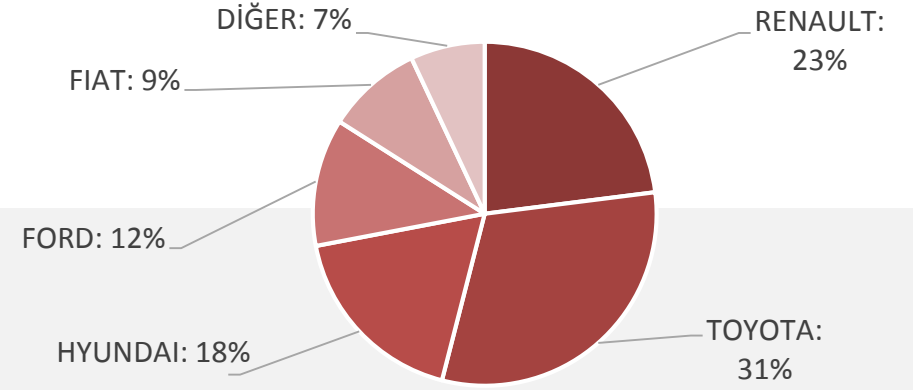
Murat KURLAR

## AJANDA

- Giriş
- Dijital Dönüşüm Motivasyonu
- Çalışma Modeli ve Süreci
- Bulgular
- Aksiyonlar
- Neler Öğrendik?

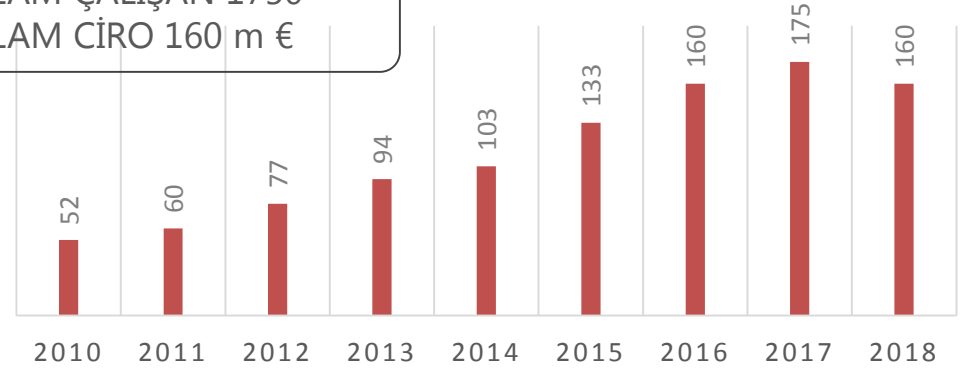
# FARPLAS

## GENEL BAKIŞ



TOPLAM ÇALIŞAN 1750  
TOPLAM CİRO 160 m €

M €





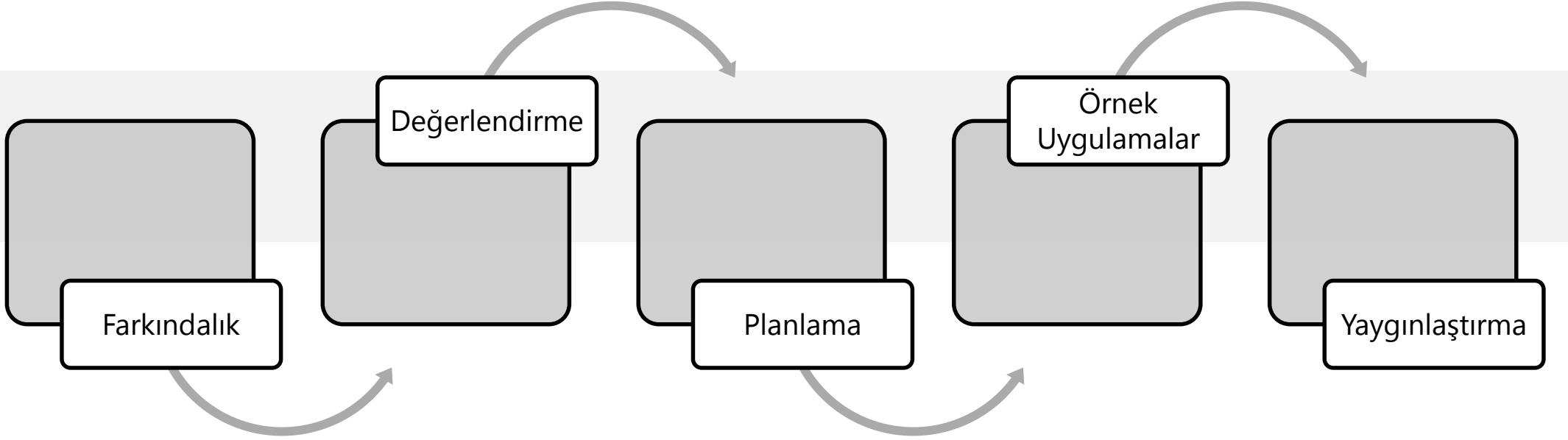
## Yetkinlikler

- Ar-Ge: Malzeme ve hafifletme
- Ürün tasarım
- Plastik enjeksiyon – Montaj - Boya
- Kalıp tasarım ve üretim
- Polimer malzeme ve boya fiziksel ve kimyasal testler

## Toplam Çalışan

- Ofis – Ar-Ge: 260
- Operatör: 1490
- TOTAL 1750**

- Kalite beklentisi yüksek
- Sürekli ve yüksek adette üretim
- Ürün izlenebilirliği gereklilikleri olan bir sektör
- Çok lokasyonda standart üretim yönetimi
- Globalleşme için farklı ülkeleri uzaktan izleme ve yönetme



FUTURE.  
MOBILITY.  
TOGETHER.

FARKINDALIK



# Dijital Dönüşüm Danışmanlık Süreci Yol Haritası Çalışması - I

## Objective

- Plant assessment study at Farplas to identify scope for improvement through Industry 4.0 principles
- To create a roadmap for Digital Transformation which would enable them to improve and provide value added services

## Scope

- Team of experts from Bosch conducted AS-IS assessment study at Farplas T1, T2, T3 & T4 facilities across the source-make-deliver loops
- The study was conducted in collaboration with various functions at Farplas such as manufacturing, logistics, maintenance, IT, quality & others

## Approach

### AS IS Understanding

- Plant walks
- Value stream analysis
- Focused Review Sessions
- Design Thinking Workshop
- Conduct Gap Analysis



### Use-case Requirements Detailing & KPI Impact

- Identification features required
- Detailing requirements
- Mapping inter-dependencies
- Categorization
- Map use-cases to KPIs



### Evaluate & Short-list Use-cases

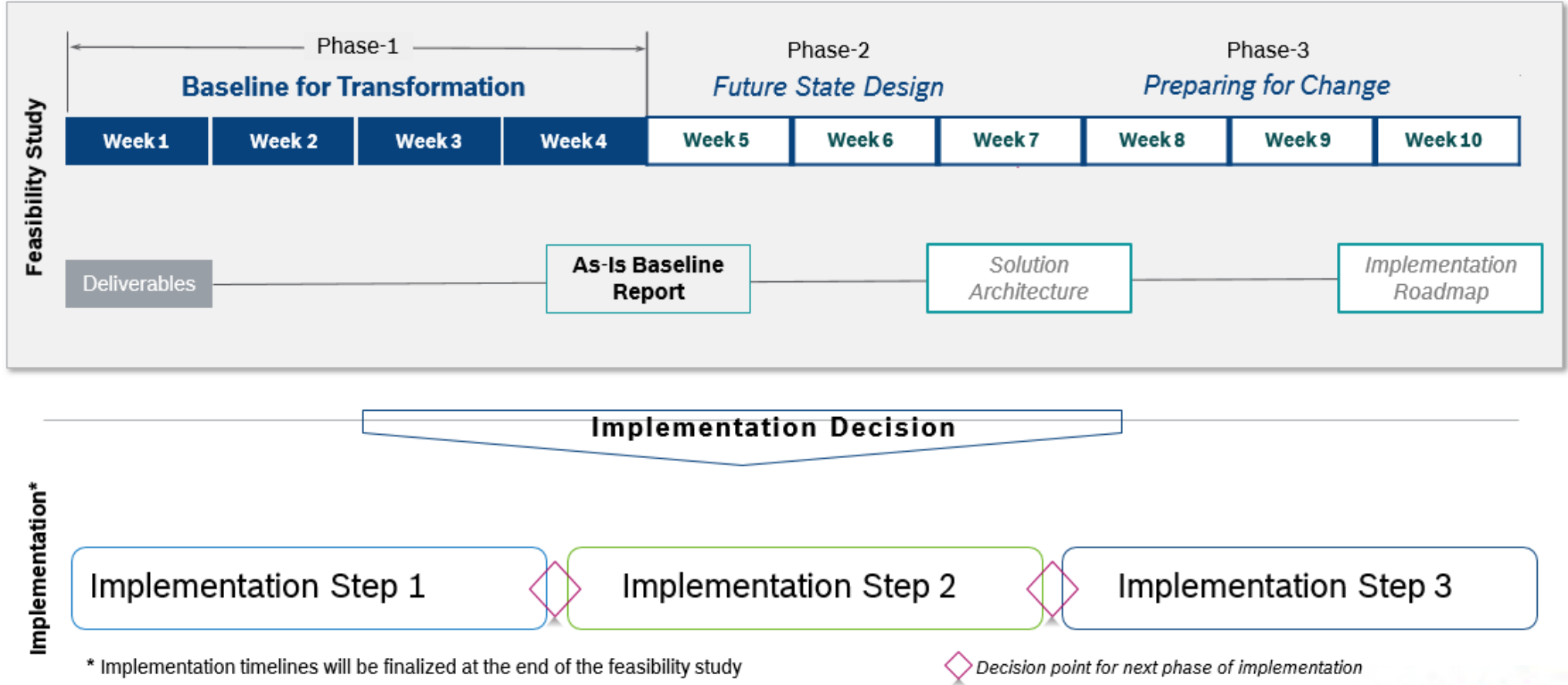
- Finalize evaluation criteria
- Shortlist use-cases based on criteria
- Decisions to be made by Farplas for upcoming weeks



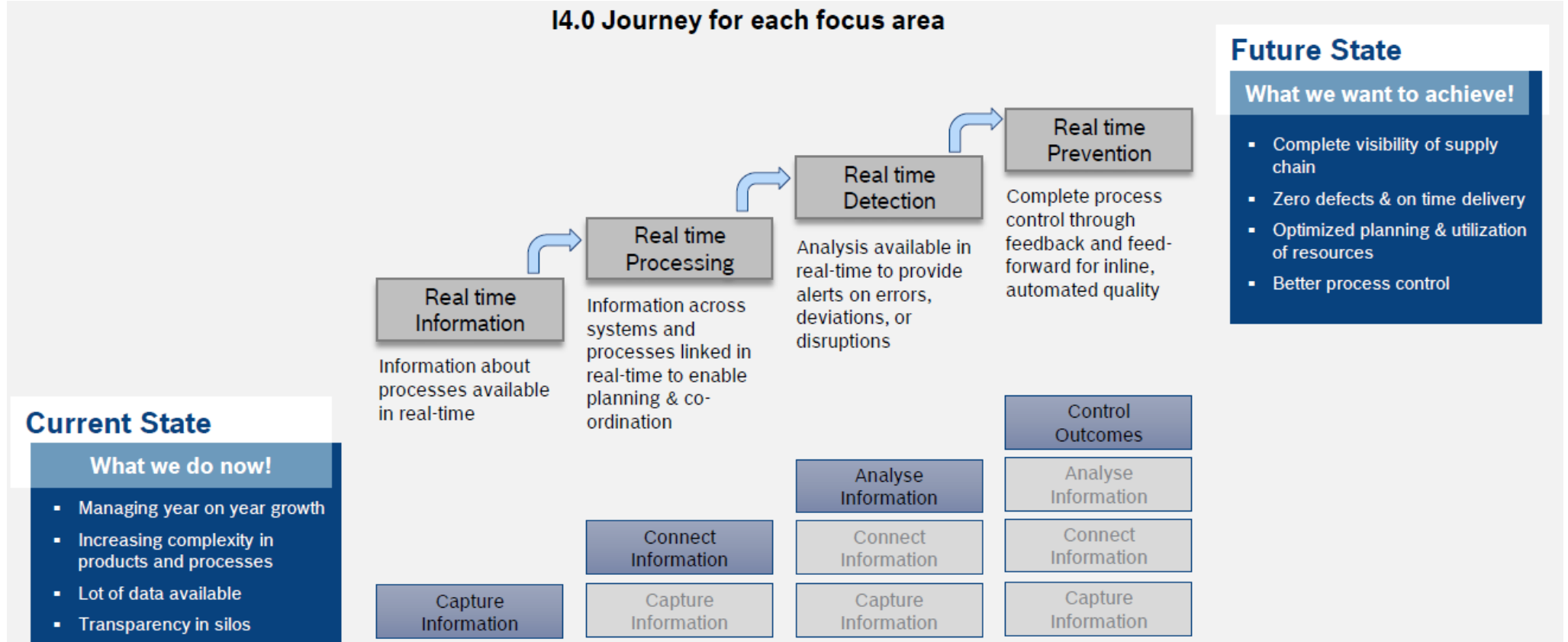
**BOSCH**



## Dijital Dönüşüm - Danışmanlık Süreci Yol Haritası Çalışması - II



# Dijital Dönüşüm – Mevcut Durum ve Gelecek Durum Tespiti



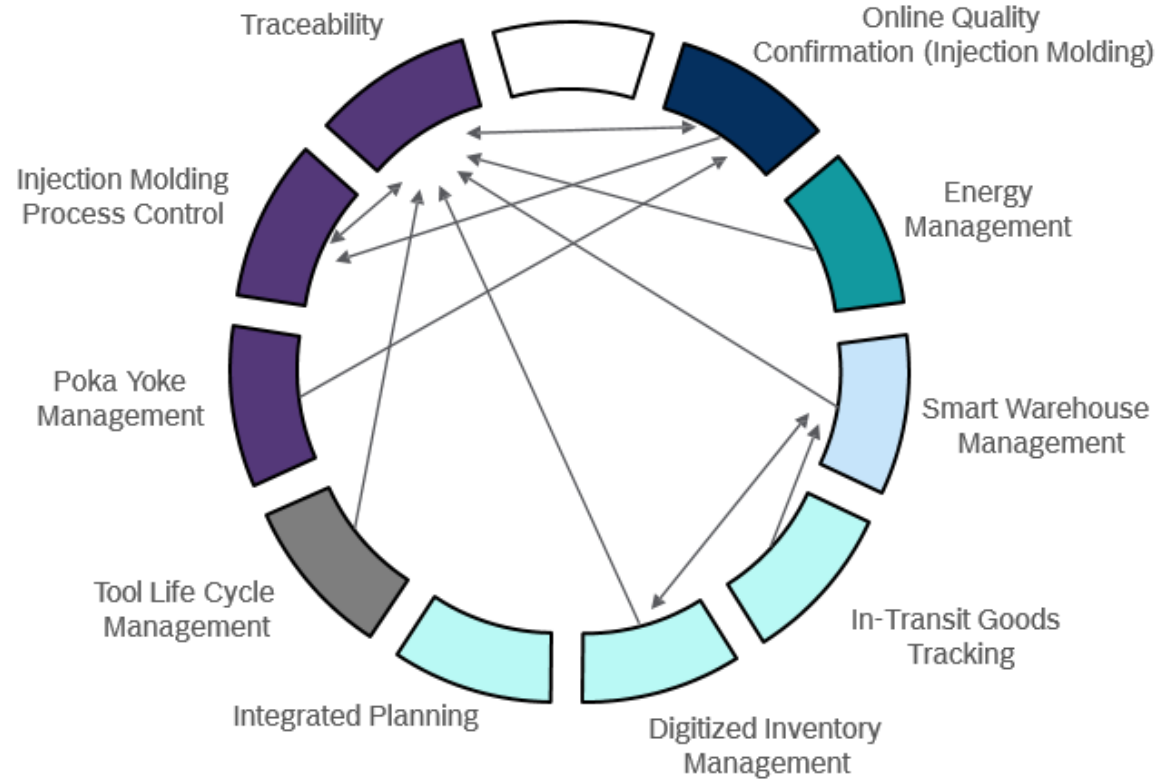
Each process was assessed by using above chart, then focus areas were determined according to result of this assesment.

# Farplas Danışmanlık Süreci Sonrası Kullanım Alanlarının (Use Case ) Birbirleriyle Bağlantıları

The dependency chart helps to identify the most critical use-cases so that we can prioritize the implementation roadmap.

- Production
- Quality
- Asset Utilization
- Warehouse Mgmt
- Supply Chain
- HSE
- Service Management
- People

$A \rightarrow B$  *A is dependent on B*  
 $A \leftrightarrow B$  *Mutual dependency between A and B*

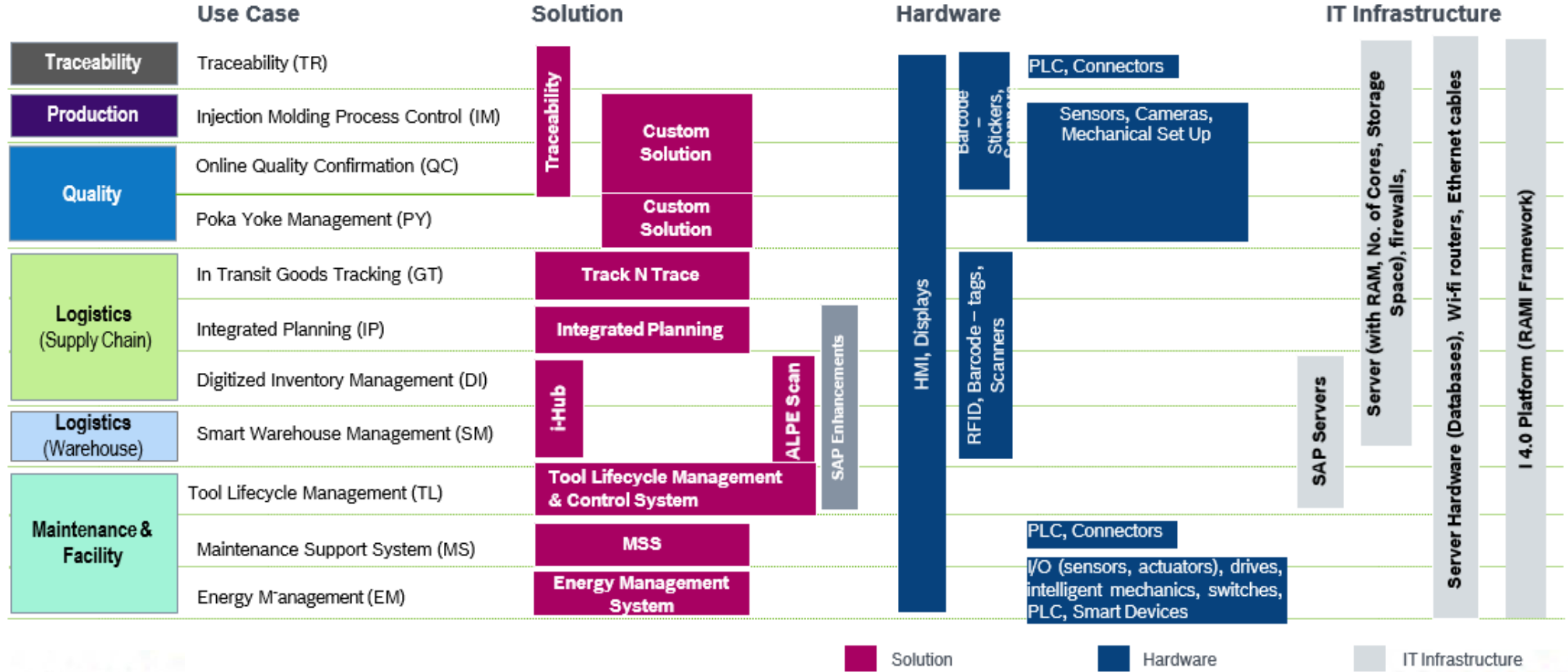


# Dijital Dönüşüm Yol Haritası Çalışması

Themes identified for Digital Transformation



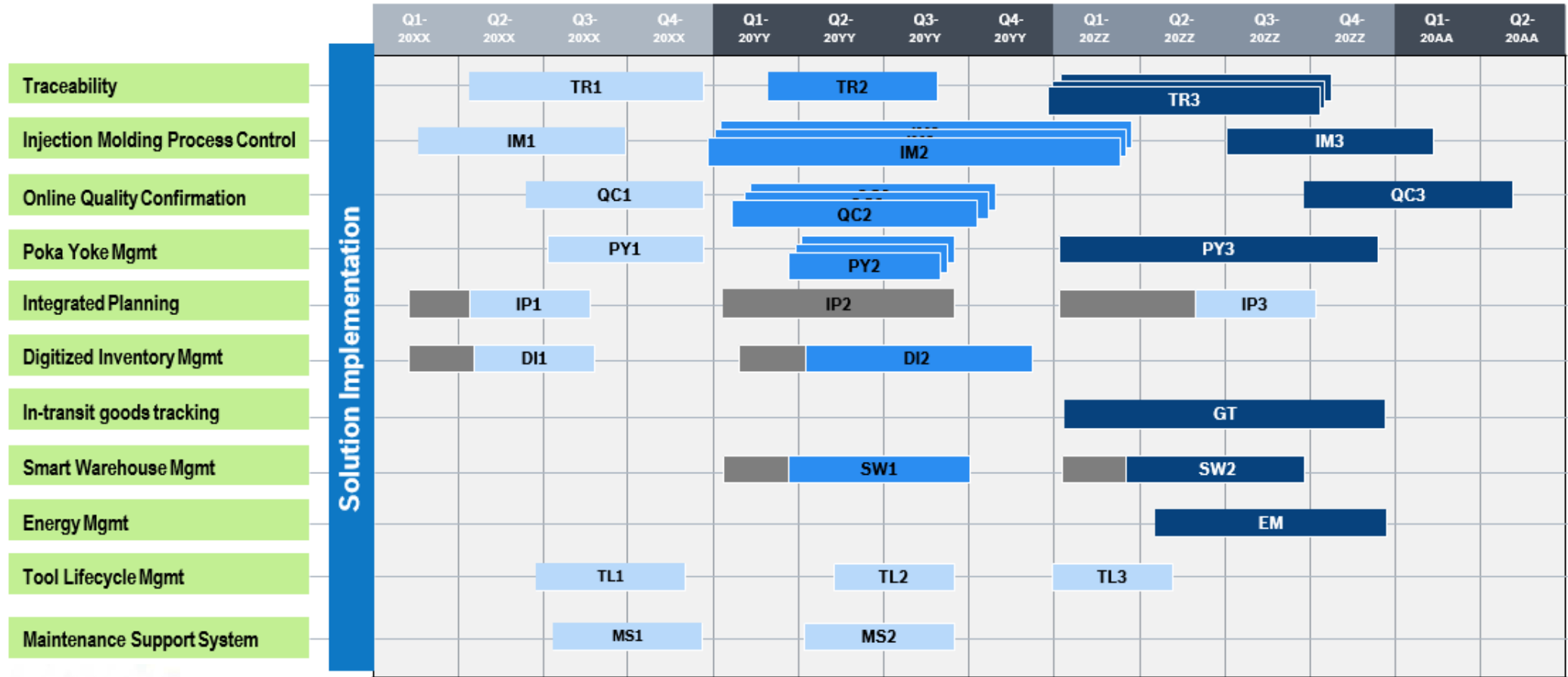
# Farplas Kullanım Alanları (Use Case) ve Uygulamalar için Çözümlerin Haritalanması



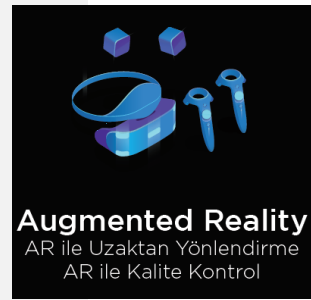
# Dijital Dönüşüm – Uygulama Yol Haritası

1 2 3 Solutions w.r.t Implementation Phases of Use Cases

SAP Enhancements



## USE CASES



## Teşekkürler